

ABM

~AsmodeuS~ Billing Manager

Last version: 0.1.6.0 (02.02.2014)

Simple Windows Interface for ABILLS Internet module.

Features

- User info
- Add payments
- Change tariff plan
- Sessions and payments statistic
- Reports
- DUNES
- Hot keys
- Multilanguage interface
- Invoice creation

Instalation

Add user to sql server

```
# mysql
use mysql;

INSERT INTO user (Host, User, Password) VALUES ('%', 'abills', password('sqlpassword'));
INSERT INTO db (Host, Db, User, Select_priv, Insert_priv, Update_priv)
VALUES ('manager_host', 'abills', 'abills', 'Y', 'Y', 'Y');
flush privileges;
```

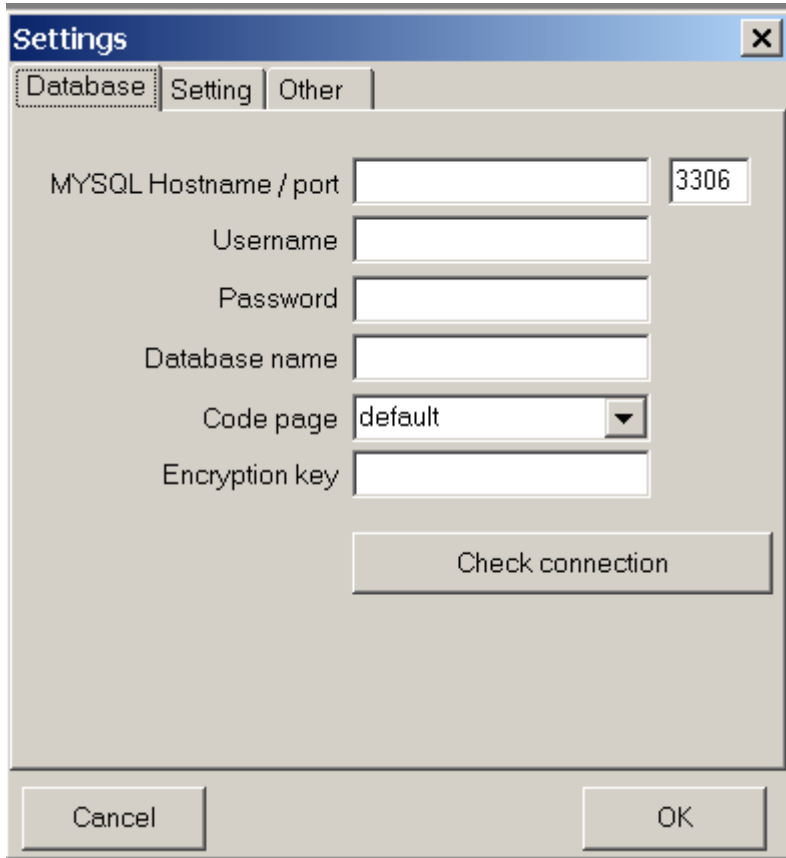
Add tables for abon module

```
# mysql -D abills < db/Abon.sql
```

Add admin to ABILLS system.

/ **System configuration/ Administrators/**

Configure



Mysql Hostname/Port	Mysql Server Port
Username	Mysql user
Password	Mysql Password
Database	Database
Codepage	Mysql Code page. (default set cp1251)
Encryption Key	Password encryption key. From /usr/abills/libexec/config.pl \$conf{secretkey}

Screenshots

User info.

ABM

Основные Инструменты Отчёты Справка

Введите: Логин

Логин

id	fio	company_nam	addr	credit
▶				

0

Информация Деньги Кредит Тарифный План

Логин: Компания:

Депозит:

Логин кредит:

Тарифный план:

Совм. сервис:

ФИО:

Телефон:

Адрес:

Заблокирован:

Окончание:

Соединился с базой! IP: 192.168.1.100 15:27:55

Add payment form.

ABM

Main Help Dunes

Username: 🔄 📊

Info Money Variant

Deposit

▶ Долари	1	Sum: 550	Cash
Українські гривні	5,15		
Гривні банк	5,4		

Total: 550

Now:

Credit

Credit limit:

Connected to database Hobot (nightfly) 10:49:13

Changing tariff plan.

The screenshot shows the ABM application window. At the top, there are menu options 'Main' and 'Help', and a 'Dunes' label. Below that is a 'Username:' field with a dropdown arrow and two icons. A tabbed interface shows 'Info', 'Money', and 'Variant' tabs. The main area contains a list with two columns: 'ID' and 'Name'. The list items are:

ID	Name
130	560Kb (14)
131	560Kb (30)
132	560Kb (60)
140	1120Kb (18)
141	1120Kb (33)
142	1120Kb (63)

At the bottom of the window, it says 'Connected to database', 'Hobot (nightfly)', and the time '10:49:24'.

Session Statistic.

The screenshot shows the 'Statistics' application window. It has two tabs: 'Usage statistics' and 'Payments statistics'. The main area is a table with the following columns: 'Date / time', 'Length', 'Cost', 'Sent', 'Received', 'Sent (int)', and 'Received (int)'. The table contains 25 rows of data, with a 'Total' row at the bottom. Below the table, there are input fields for 'Username: neo', 'From: 01.03.2006', and 'To: 14.04.2006', along with 'Print' and 'Update' buttons.

Date / time	Length	Cost	Sent	Received	Sent (int)	Received (int)
13.04.2006 23:45:33	1:25:05	0	15,30M	1,63M	0B	0B
13.04.2006 23:33:42	0:01:35	0	28,94K	6,55K	0B	0B
13.04.2006 23:32:00	0:00:10	0	16,58K	4,18K	0B	0B
13.04.2006 23:24:47	0:02:47	0	379,63K	36,24K	0B	0B
13.04.2006 23:23:17	0:01:01	0	44,67K	4,22K	0B	0B
13.04.2006 22:47:10	0:34:14	0	38,23K	9,37K	0B	0B
12.04.2006 22:12:34	0:50:55	0	10,88M	729,70K	0B	0B
12.04.2006 0:54:53	0:00:51	0	37,43K	14,89K	0B	0B
11.04.2006 20:27:04	4:26:15	0	47,22M	3,59M	0B	0B
11.04.2006 18:34:00	0:15:26	0	7,48M	126,14K	0B	0B
11.04.2006 18:31:45	0:01:33	0	110,96K	9,43K	81,70K	2,25K
11.04.2006 11:23:01	0:16:50	0	582,21K	138,54K	0B	0B
11.04.2006 0:10:15	0:40:47	0	19,43M	1,03M	0B	0B
11.04.2006 0:07:32	0:02:40	0	63,30K	18,89K	523,91K	16,70K
10.04.2006 22:52:18	1:15:03	0	31,92M	2,36M	5,77M	2,14M
09.04.2006 22:57:37	2:00:34	0	21,88M	2,35M	0B	0B
09.04.2006 13:54:18	0:03:49	0	724B	4,42K	13,61M	244,54K
09.04.2006 13:51:44	0:02:25	0	713,28K	129,42K	0B	0B
07.04.2006 22:00:54	2:02:35	0	20,56M	2,21M	0B	0B
07.04.2006 21:53:44	0:06:33	0	1,53M	154,81K	0B	0B
07.04.2006 21:47:38	0:05:49	0	2,25M	171,07K	0B	0B
07.04.2006 21:34:57	0:12:09	0	7,44M	455,39K	9,08M	183,58K
07.04.2006 21:26:36	0:00:21	0	312B	3,87K	0B	0B
07.04.2006 21:21:07	0:03:45	0	48,49K	12,96K	0B	0B
07.04.2006 21:19:52	0:00:59	0	824B	3,92K	0B	0B
Total	103:08:55	0	2,84G	144,82M	3,04G	62,17M

Payment statistic.

Statistics

Usage statistics | Payments statistics

Payment Date	Sum	Balance
▶ 25.02.2006 16:01:38	0,19	0
25.02.2006 16:01:24	0,19	0
09.02.2006 17:28:12	0,1	0,381653
0.48		

Username: From: To: Print Update

Report.

